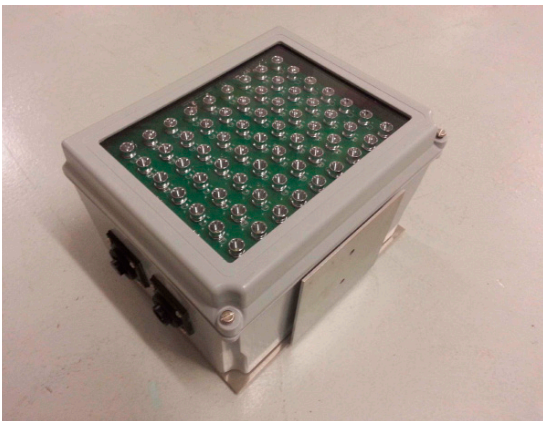


# Sighting Pro Camera Series™



*The absolute latest technology for 24 hour all weather ALPR ready image capture for both single lane and open road systems. Modular extensible design uses commercially available products and standard interfaces which guarantees a long product lifecycle and future availability*



- Available with a Variety of Different Camera Imagers, Resolutions and Frame Rates

- Built-In Latest Intel 9th Generation Core Technology Processor

- Aluminum Case and Sunshield for Rugged Harsh Environments

- Remote Digital Focus, Iris and Zoom Controls for Ease of Alignment

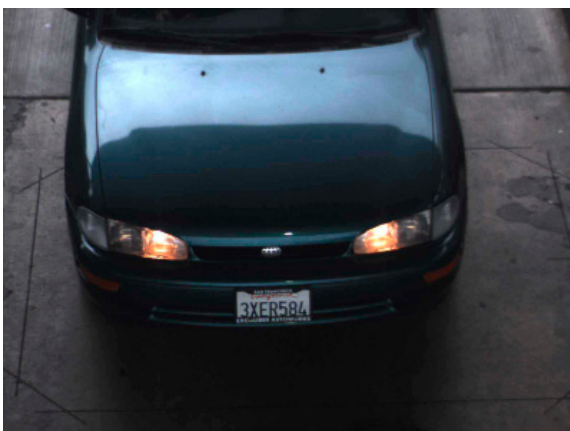
- Multiple Illuminator Options - Visible (Cool White) and IR

- External Trigger via Ethernet and Self Triggering

- Extensive Use of ROI (Regions of Interest)

- Ethernet Interface for Easy Integration

**Front Color Image - 2 MP**



**Rear Color Image - 2 MP**



## Camera

The camera is a fully digital unit using a global shutter. Resolution ranges from 0.6MP to 9.1 MP. Both CCD and CMOS camera options are available. The camera is enclosed in a sealed stainless steel enclosure with an optional sunshield for operations in rugged environments. A thermostatically controlled heater prevents window fogging. The camera is normally equipped with a zoom lens with variable iris that can be controlled and focused from a remote location, however, it can be equipped with a fixed lens in certain applications. Input voltage range is from 110 to 240 volts at 50/60 Hz.

## Processor

The TDS Sighting Pro camera systems contain an Intel 9th generation core technology processor. This dual core processor design utilizes latest Intel 9th Generation Core technology to provide the highest performance at the lowest power. It provides the processing power necessary for high volume traffic applications. The interface is Ethernet 10/100/1000. The unit is able to upload images and status data over a variety of interfaces and protocols including FTP, SFTP, MySQL, Oracle, Postgres, SMB, or custom. An optional Ethernet fiber extender system allows the cameras to be located up to 1500 feet from the lane processor.

## Illuminator

The TDS LED illuminator products provide pulsed flash illumination to enable photo capture during low light conditions. The illuminator strobe is digitally controlled with the illuminator only being activated during the exposure period. This results in a significantly lower duty cycle which results in a low average power consumption and an operational lifecycle of 10+ years. Illuminators are available in visible (cool white), deep red, and IR frequencies. The illuminator also features 2 user selectable intensity levels along with a constant low intensity mode with triggered high intensity flash.

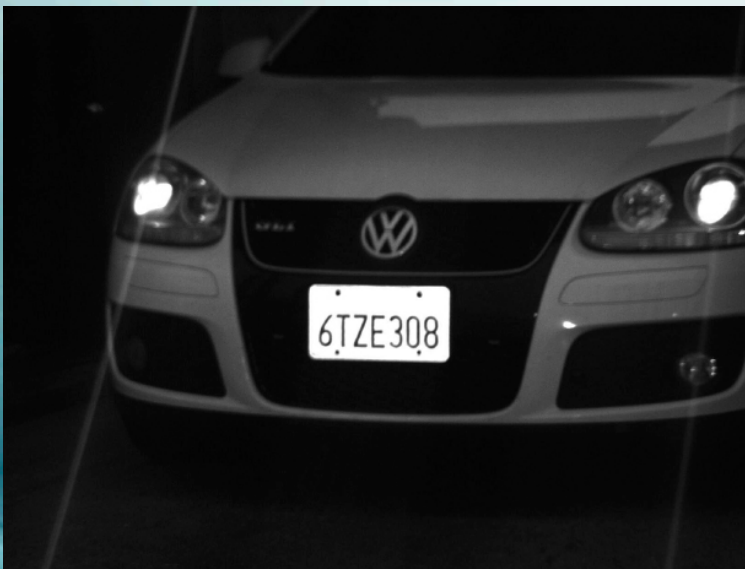
## Optical Character Recognition

The TDS OCR engine leverages the high quality of the images provided by the TDS Sighting Pro camera systems to quickly and accurately locate the plate in the image and deliver outstanding read rates. The TDS reader can be "trained" to a single plate style or to multiple styles to maximize the level of automation and reduce manual labor costs. Additional recognition algorithms allow for the identification of state of origin.

## Applications

The TDS Sighting Pro camera systems are integrated into several TDS products including parking lot, toll road (single lane and open road), border crossing, travel time systems and mobile applications.

### *Front IR Image - 2 MP*



## Contact Info

Tony Hasselbring

619 295-5050

[www.transportdatasystems.com](http://www.transportdatasystems.com)

